

Liability limited by a scheme approved under Professional Standards Legislation

<div>SCALE</div> <div>1:1000 ● A1 SIZE</div> <div>1:2000 ● A3 SIZE</div>		<div>WARNING NOTE:</div> <div>THE INFORMATION SHOWN ON THIS PLAN (OR THE DATA TRANSMITTED HEREWITH) IS CORRECT AS AT 14/11/2022 AND HAS BEEN PREPARED IN ACCORDANCE WITH THE REQUIREMENTS OF TERRIOR.</div>		<div>SURVEY</div> <div>DH</div>		<div>AMENDMENTS</div> <div>A – ORIGINAL ISSUE</div>		<div>BY</div> <div>DH</div>	<div>DATE</div> <div>14/11/2022</div>	<div></div> <div>BEWARE – Damage to telephone cables can disrupt communication services and cost you money. For prompt location of telephone cables ring – 1100</div> <div>DIAL 1100 BEFORE YOU DIG</div> <div>Calls to this number are free.</div>		<div></div> <div>SET CONSULTANTS PTY LTD</div> <div>51 Graham Street Nowra</div> <div>P.O. Box 495 Nowra NSW 2541</div> <div>p 02 4421 4500</div> <div>Kiama 02 4233 2006</div> <div>mail@setconsultants.com.au</div> <div>www.setconsultants.com.au</div> <div>ABN 54 682 364 037</div> <div>SURVEYING ENGINEERING TOWN PLANNING</div>		<div>SKETCH PLAN SHOWING DETAIL OVER</div> <div>LOT 1 DP1018193, LOT 1 DP847203 & LOT 1 DP1104402</div> <div>'WEST NOWRA RECYCLING & WASTE DEPOT'</div> <div>No.120 FLATROCK ROAD, MUNDAMIA</div> <div>FOR TERRIOR</div>		<div>A1</div> <div>SHEET</div> <div>1</div> <div>OF</div> <div>6</div> <div>SHEETS</div>	<div>REF. No.</div> <div>104083/1</div>
--	--	---	--	---------------------------------	--	---	--	-----------------------------	---------------------------------------	--	--	--	--	--	--	--	---

DP808415 436, DP1018193 1, DP 847203 1, DP257515 342, DP 1104402 1



DP257515
342

SCALE BAR

0 1 2 3 4 5 10 20

Liability limited by a scheme approved under Professional Standards Legislation

LEGEND

— TOP OF BANK

— BOTTOM OF BANK

— OVERHEAD TRANSMISSION LINES

- WARNING NOTES**
1. CONTOURS SHOWN DEPICT THE TOPOGRAPHY, EXCEPT AT SPOT LEVELS SHOWN THEY DO NOT REPRESENT THE EXACT LEVEL AT ANY PARTICULAR POINT
 2. AUSTRALIAN HEIGHT DATUM WAS ESTABLISHED USING CORNET VIA GNSS SURVEY
 3. THE INFORMATION IS ONLY TO BE USED AT A SCALE ACCURACY OF 1:200
 4. TREE SPREAD AND TRUNK DIAMETER ARE APPROXIMATE ONLY. TREE SPREAD AS DEPICTED IS SYMBOLIC ONLY

<p>SCALE</p> <p>1:200 ● A1 SIZE</p> <p>1:400 ● A3 SIZE</p>	<p>DATE</p> <p>AHD</p> <p>CONTOUR INTERVAL 0.5m</p>	<p>WARNING NOTE:</p> <p>THE INFORMATION SHOWN ON THIS PLAN (OR THE DATA TRANSMITTED HEREWITH) IS CORRECT AS AT 14/11/2022 AND HAS BEEN PREPARED IN ACCORDANCE WITH THE REQUIREMENTS OF TERRIOR.</p> <p>THESE WARNING NOTES MUST NOT BE REMOVED FROM THIS ELECTRONIC FILE. IF THESE NOTES ARE REMOVED SET CONSULTANTS PTY LTD IS RELIEVED OF ALL RESPONSIBILITY AND LIABILITY RELATING TO ANY SUBSEQUENT USE OF THE INFORMATION CONTAINED WITHIN THIS FILE.</p> <p>THIS ELECTRONIC FILE SHALL NOT BE TRANSMITTED TO ANY THIRD PARTY WITHOUT THE EXPRESS PERMISSION OF SET CONSULTANTS PTY LTD.</p>	<table><tr><th>SURVEY</th><th>DH</th><th>AMENDMENTS</th><th>BY</th><th>DATE</th></tr><tr><td>DESIGN</td><td></td><td>A - ORIGINAL ISSUE</td><td>DH</td><td>14/11/2022</td></tr><tr><td>DRAWN</td><td>DH</td><td></td><td></td><td></td></tr><tr><td>CHECKED</td><td>SA</td><td></td><td></td><td></td></tr><tr><td>APPROVED</td><td></td><td></td><td></td><td></td></tr></table>	SURVEY	DH	AMENDMENTS	BY	DATE	DESIGN		A - ORIGINAL ISSUE	DH	14/11/2022	DRAWN	DH				CHECKED	SA				APPROVED					<p>SET CONSULTANTS PTY LTD</p> <p>51 Graham Street Nowra</p> <p>PO Box 495 Nowra NSW 2541</p> <p>p 02 4421 4500</p> <p>Kiama 02 4233 2006</p> <p>mail@setconsultants.com.au</p> <p>www.setconsultants.com.au</p> <p>ABN 54 682 364 037</p>	<p>SKETCH PLAN SHOWING DETAIL OVER</p> <p>LOT 1 DP1018193, LOT 1 DP847203 & LOT 1 DP1104402</p> <p>'WEST NOWRA RECYCLING & WASTE DEPOT'</p> <p>No.120 FLATROCK ROAD, MUNDAMIA</p> <p>FOR TERRIOR</p>	<p>A1</p> <p>SHEET 2 OF 6 SHEETS</p> <p>REF. No.</p> <p>104083/1</p>
SURVEY	DH	AMENDMENTS	BY	DATE																											
DESIGN		A - ORIGINAL ISSUE	DH	14/11/2022																											
DRAWN	DH																														
CHECKED	SA																														
APPROVED																															

DP257515 342



SCALE BAR

0 1 2 3 4 5 10 20

Liability limited by a scheme approved under Professional Standards Legislation

LEGEND

TOP OF BANK

BOTTOM OF BANK

OVERHEAD TRANSMISSION LINES

WARNING NOTES

1. CONTOURS SHOWN DEPICT THE TOPOGRAPHY, EXCEPT AT SPOT LEVELS SHOWN THEY DO NOT REPRESENT THE EXACT LEVEL AT ANY PARTICULAR POINT

2. AUSTRALIAN HEIGHT DATUM WAS ESTABLISHED USING CORNET VIA GNSS SURVEY

3. THE INFORMATION IS ONLY TO BE USED AT A SCALE ACCURACY OF 1:200

4. TREE SPREAD AND TRUNK DIAMETER ARE APPROXIMATE ONLY. TREE SPREAD AS DEPICTED IS SYMBOLIC ONLY

SCALE

1:200 ● A1 SIZE

1:400 ● A3 SIZE

DATUM

AHD

CONTOUR INTERVAL 0.5m

WARNING NOTE:

THE INFORMATION SHOWN ON THIS PLAN (OR THE DATA TRANSMITTED HEREWITH) IS CORRECT AS AT 14/11/2022 AND HAS BEEN PREPARED IN ACCORDANCE WITH THE REQUIREMENTS OF TERRIOR.

THESE WARNING NOTES MUST NOT BE REMOVED FROM THIS ELECTRONIC FILE. IF THESE NOTES ARE REMOVED SET CONSULTANTS PTY LTD IS RELIEVED OF ALL RESPONSIBILITY AND LIABILITY RELATING TO ANY SUBSEQUENT USE OF THE INFORMATION CONTAINED WITHIN THIS FILE.

THIS ELECTRONIC FILE SHALL NOT BE TRANSMITTED TO ANY THIRD PARTY WITHOUT THE EXPRESS PERMISSION OF SET CONSULTANTS PTY LTD.

SURVEY	DH	AMENDMENTS	BY	DATE
DESIGN		A - ORIGINAL ISSUE	DH	14/11/2022
DRAWN	DH			
CHECKED	SA			
APPROVED				

BEWARE

Damage to telephone cables can disrupt communication services and cost you money. For prompt location of telephone cables ring - 1100

DIAL 1100

BEFORE YOU DIG

Calls to this number are free.

SET

consultants

SURVEYING | ENGINEERING | TOWN PLANNING

SET CONSULTANTS PTY LTD

51 Graham Street Nowra

PO Box 495 Nowra NSW 2541

p 02 4421 4500

Kiama 02 4233 2006

mail@setconsultants.com.au

www.setconsultants.com.au

ABN 54 682 364 037

SKETCH PLAN SHOWING DETAIL OVER

LOT 1 DP1018193, LOT 1 DP847203 & LOT 1 DP1104402

'WEST NOWRA RECYCLING & WASTE DEPOT'

No.120 FLATROCK ROAD, MUNDAMIA

FOR TERRIOR

A1

SHEET 3 OF 6 SHEETS

REF. No.

104083/1

999001-A1-104083-Set-Consultants-terrior



SCALE BAR

0 1 2 3 4 5 10 20

Liability limited by a scheme approved under Professional Standards Legislation

LEGEND

- TOP OF BANK
- BOTTOM OF BANK
- OVERHEAD TRANSMISSION LINES

WARNING NOTES

- CONTOURS SHOWN DEPICT THE TOPOGRAPHY, EXCEPT AT SPOT LEVELS SHOWN THEY DO NOT REPRESENT THE EXACT LEVEL AT ANY PARTICULAR POINT
- AUSTRALIAN HEIGHT DATUM WAS ESTABLISHED USING CORNET VIA GNSS SURVEY
- THE INFORMATION IS ONLY TO BE USED AT A SCALE ACCURACY OF 1:200
- TREE SPREAD AND TRUNK DIAMETER ARE APPROXIMATE ONLY. TREE SPREAD AS DEPICTED IS SYMBOLIC ONLY

SCALE

1:200 ● A1 SIZE

1:400 ● A3 SIZE

DATUM

AHD

CONTOUR INTERVAL 0.5m

WARNING NOTE:

THE INFORMATION SHOWN ON THIS PLAN (OR THE DATA TRANSMITTED HEREWITH) IS CORRECT AS AT 14/11/2022 AND HAS BEEN PREPARED IN ACCORDANCE WITH THE REQUIREMENTS OF TERRIOR.

THESE WARNING NOTES MUST NOT BE REMOVED FROM THIS ELECTRONIC FILE. IF THESE NOTES ARE REMOVED SET CONSULTANTS PTY LTD IS RELIEVED OF ALL RESPONSIBILITY AND LIABILITY RELATING TO ANY SUBSEQUENT USE OF THE INFORMATION CONTAINED WITHIN THIS FILE.

THIS ELECTRONIC FILE SHALL NOT BE TRANSMITTED TO ANY THIRD PARTY WITHOUT THE EXPRESS PERMISSION OF SET CONSULTANTS PTY LTD.

SURVEY	DH	AMENDMENTS	BY	DATE
DESIGN	A	ORIGINAL ISSUE		14/11/2022
DRAWN	DH			
CHECKED	SA			
APPROVED				

SET

consultants

SET CONSULTANTS PTY LTD

51 Graham Street Nowra

PO Box 495 Nowra NSW 2541

p 02 4421 4500

Kiama 02 4233 2006

mail@setconsultants.com.au

www.setconsultants.com.au

ABN 54 682 364 037

SKETCH PLAN SHOWING DETAIL OVER

LOT 1 DP1018193, LOT 1 DP847203 & LOT 1 DP1104402

'WEST NOWRA RECYCLING & WASTE DEPOT'

No.120 FLATROCK ROAD, MUNDAMIA

FOR TERRIOR

A1

SHEET 4 OF 6 SHEETS

REF. No.

104083/1

DIAL 1100

BEFORE YOU DIG

BEWARE - Damage to telephone cables can disrupt communication services and cost you money. For prompt location of telephone cables ring - 1100

Calls to this number are free.



SCALE BAR

0 1 2 3 4 5 10 20

Liability limited by a scheme approved under Professional Standards Legislation

SCALE

1:200 ● A1 SIZE

1:400 ● A3 SIZE

DATUM

AHD

CONTOUR INTERVAL 0.5m

WARNING NOTE:

THE INFORMATION SHOWN ON THIS PLAN (OR THE DATA TRANSMITTED HEREWITH) IS CORRECT AS AT 14/11/2022 AND HAS BEEN PREPARED IN ACCORDANCE WITH THE REQUIREMENTS OF TERRIOR.

THESE WARNING NOTES MUST NOT BE REMOVED FROM THIS ELECTRONIC FILE. IF THESE NOTES ARE REMOVED SET CONSULTANTS PTY LTD IS RELIEVED OF ALL RESPONSIBILITY AND LIABILITY RELATING TO ANY SUBSEQUENT USE OF THE INFORMATION CONTAINED WITHIN THIS FILE.

THIS ELECTRONIC FILE SHALL NOT BE TRANSMITTED TO ANY THIRD PARTY WITHOUT THE EXPRESS PERMISSION OF SET CONSULTANTS PTY LTD.

LEGEND

— TOP OF BANK

— BOTTOM OF BANK

— OVERHEAD TRANSMISSION LINES

WARNING NOTES

1. CONTOURS SHOWN DEPICT THE TOPOGRAPHY, EXCEPT AT SPOT LEVELS SHOWN THEY DO NOT REPRESENT THE EXACT LEVEL AT ANY PARTICULAR POINT

2. AUSTRALIAN HEIGHT DATUM WAS ESTABLISHED USING CORSNET VIA GNSS SURVEY

3. THE INFORMATION IS ONLY TO BE USED AT A SCALE ACCURACY OF 1:200

4. TREE SPREAD AND TRUNK DIAMETER ARE APPROXIMATE ONLY. TREE SPREAD AS DEPICTED IS SYMBOLIC ONLY

SET consultants

SET CONSULTANTS PTY LTD

51 Graham Street Nowra

PO Box 495 Nowra NSW 2541

p 02 4421 4500

Kiama 02 4233 2006

mail@setconsultants.com.au

www.setconsultants.com.au

ABN 54 682 364 037

SURVEYING | ENGINEERING | TOWN PLANNING

SKETCH PLAN SHOWING DETAIL OVER

LOT 1 DP1018193, LOT 1 DP847203 & LOT 1 DP1104402

'WEST NOWRA RECYCLING & WASTE DEPOT'

No.120 FLATROCK ROAD, MUNDAMIA

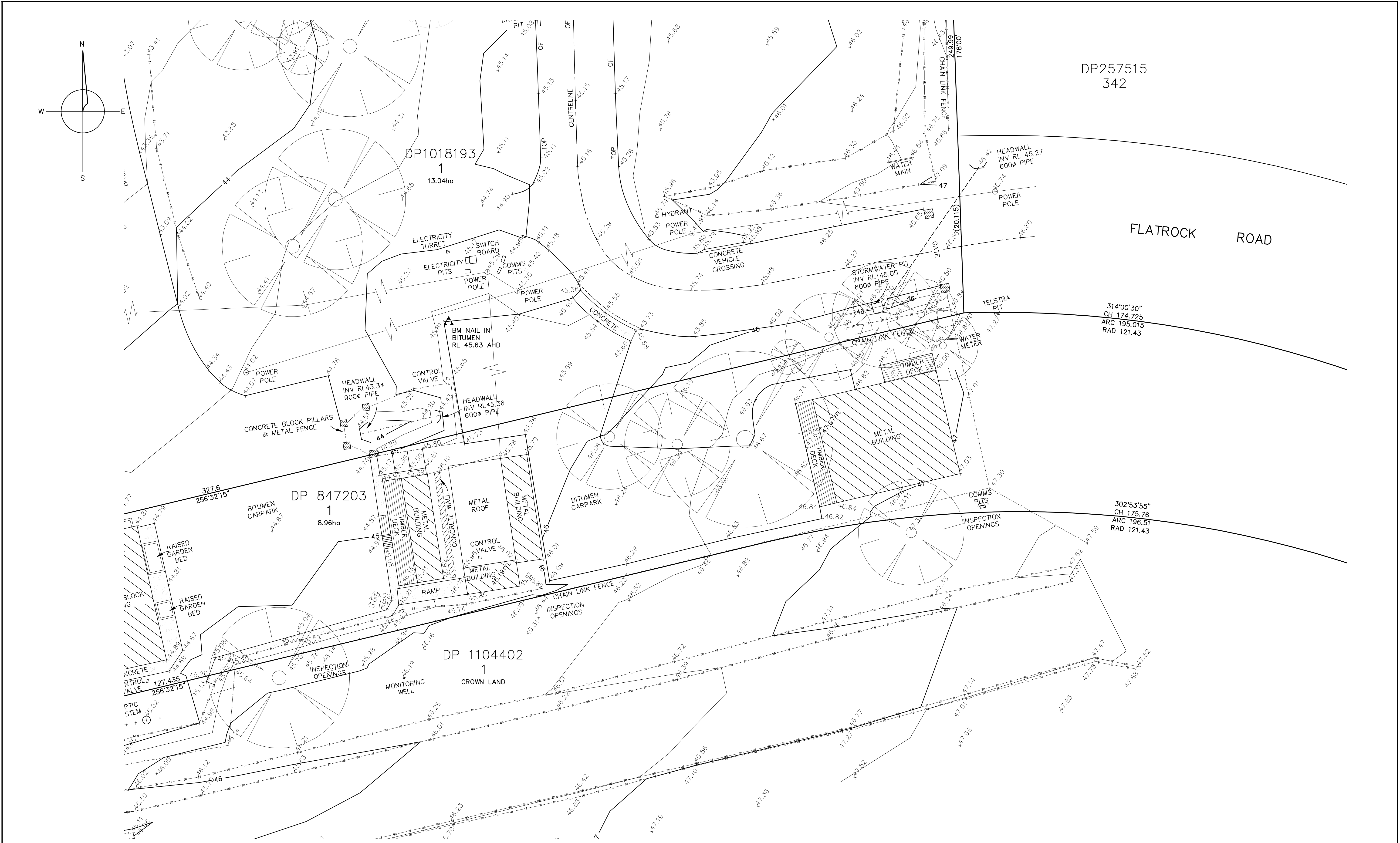
FOR TERRIOR

A1

SHEET 5 OF 6 SHEETS

REF. No.

104083/1



SCALE BAR

0 1 2 3 4 5 10 20

Liability limited by a scheme approved under Professional Standards Legislation

LEGEND

- TOP OF BANK
- BOTTOM OF BANK
- OVERHEAD TRANSMISSION LINES

WARNING NOTES

- CONTOURS SHOWN DEPICT THE TOPOGRAPHY, EXCEPT AT SPOT LEVELS SHOWN THEY DO NOT REPRESENT THE EXACT LEVEL AT ANY PARTICULAR POINT
- AUSTRALIAN HEIGHT DATUM WAS ESTABLISHED USING CORSNET VIA GNSS SURVEY
- THE INFORMATION IS ONLY TO BE USED AT A SCALE ACCURACY OF 1:200
- TREE SPREAD AND TRUNK DIAMETER ARE APPROXIMATE ONLY. TREE SPREAD AS DEPICTED IS SYMBOLIC ONLY

SCALE

1:200 ● A1 SIZE

1:400 ● A3 SIZE

DATUM

AHD


CONTOUR INTERVAL 0.5m

WARNING NOTE:
THE INFORMATION SHOWN ON THIS PLAN (OR THE DATA TRANSMITTED HEREWITH) IS CORRECT AS AT 14/11/2022 AND HAS BEEN PREPARED IN ACCORDANCE WITH THE REQUIREMENTS OF TERRIOR.

THESE WARNING NOTES MUST NOT BE REMOVED FROM THIS ELECTRONIC FILE. IF THESE NOTES ARE REMOVED SET CONSULTANTS PTY LTD IS RELIEVED OF ALL RESPONSIBILITY AND LIABILITY RELATING TO ANY SUBSEQUENT USE OF THE INFORMATION CONTAINED WITHIN THIS FILE.

THIS ELECTRONIC FILE SHALL NOT BE TRANSMITTED TO ANY THIRD PARTY WITHOUT THE EXPRESS PERMISSION OF SET CONSULTANTS PTY LTD.


SURVEY	DH	AMENDMENTS	BY	DATE
DESIGN		A - ORIGINAL ISSUE		14/11/2022
DRAWN	DH			
CHECKED	SA			
APPROVED				



DIAL 1100
BEFORE YOU DIG

BEWARE - Damage to telephone cables can disrupt communication services and cost you money. For prompt location of telephone cables ring - 1100

Calls to this number are free.



SET
consultants

SET CONSULTANTS PTY LTD
51 Graham Street Nowra
PO Box 495 Nowra NSW 2541
p 02 4421 4500
Kiama 02 4233 2006
moli@setconsultants.com.au
www.setconsultants.com.au
ABN 54 682 364 037

SKETCH PLAN SHOWING DETAIL OVER

LOT 1 DP1018193, LOT 1 DP847203 & LOT 1 DP1104402

'WEST NOWRA RECYCLING & WASTE DEPOT'

No.120 FLATROCK ROAD, MUNDAMIA

FOR TERRIOR

A1	SHEET 6 OF 6 SHEETS
REF. No.	104083/1